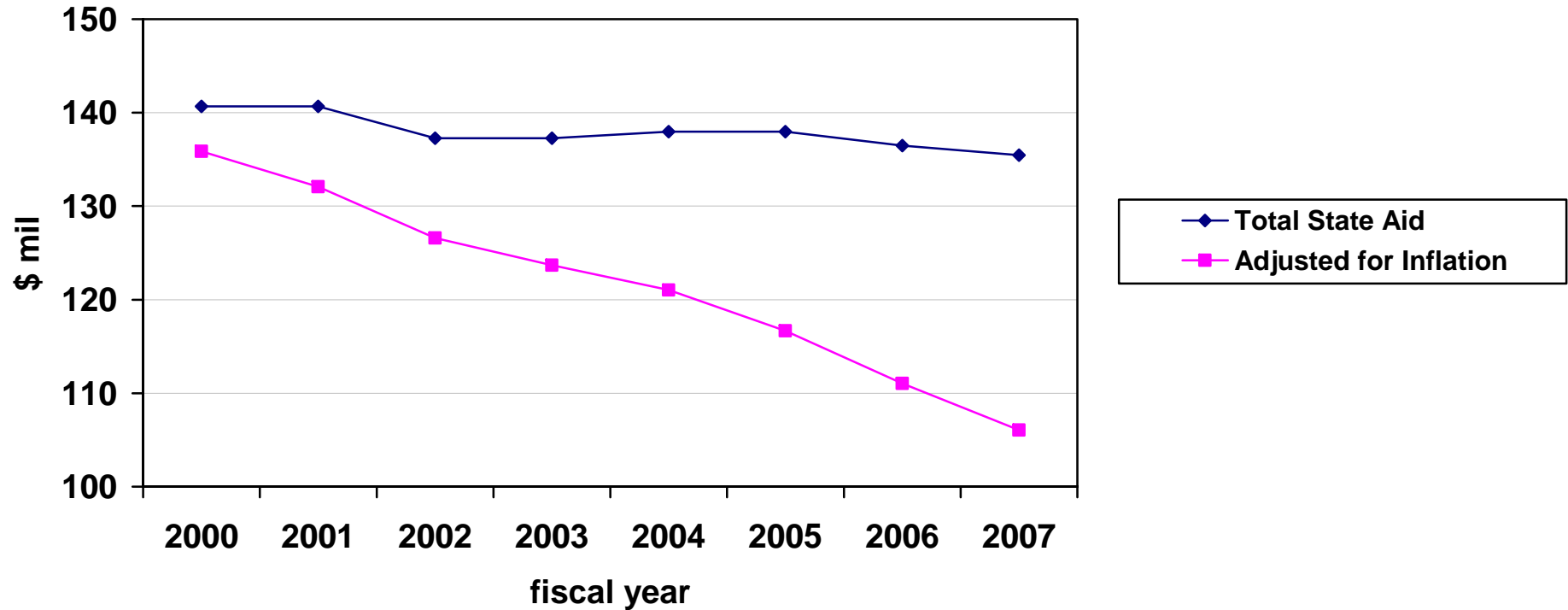


Eroding State Support for Wisconsin Technical Colleges 2000 - 2007



State support for Wisconsin Technical Colleges has decreased in real terms since 2000. Moreover, even historically low inflation rates take a large toll on funding impact after years of stagnant or falling state support.

By 2007, the impact of eroding state support will be almost \$35 million annually in just seven years when adjusted for inflation. This enormous loss assumes that no further cuts are made to state support, and that inflation remains low.

Bottom Line: Technical Colleges have not been “held harmless” in the state budget process. Diminishing state support of technical colleges fuels a shift of technical college costs to local property taxpayers.

For more information, contact Paul Gabriel, Wisconsin Technical College District Boards Association, 608 266-9430, pgabriel@districtboards.org.
Notes/sources on reverse

Notes:

- “Fiscal year” is July through June.
- “State Aid” through 2005 is WTCS general aid plus categorical aid according to Wisconsin Legislative Fiscal Bureau reports. Aid figures for 2006-07 assume a \$2 million cut required by 2005 Act 25 will be made as a \$1 million cut in each year. Total aid for 2006-07 does not include job training grant funds which pass through districts to business/industry.
- “Inflation” is U.S. CPI, all urban consumers, Department of Labor, to July, 2005. CPI for 7/2005 through to 6/2007 is estimated at 3.5% annually (The Department of Labor reports the annual U.S. all urban consumers rate is 3.6% as of August, 2006).